

Note: Path of center of gravity of post-tensioning steel shall approximate a parabola. Anchor points shall be located at the normal tendon ends. Details, including grouting and to be submitted for approval of the Engineer.

Working force P (final) shall be:  
 Span 4, P = 4135 kips final force  
 Span 5, P = 3130 kips final force  
 P = 14000 psi at post-tensioning.

**AS BUILT**

*OPTIONAL*  
*NOT USED*

OPTIONAL DETAILS, SPANS 4 & 5  
**COLTON CUT-OFF**  
 SOUTHERN PACIFIC COMPANY  
 PACIFIC LINES

CITY OF SAN BERNARDINO  
 ARROW/ ROUTE-RIALTO AVE UNDERPASS  
 BRIDGE M.P. 4900  
 POST-TENSIONED BOX GIRDER DETAIL

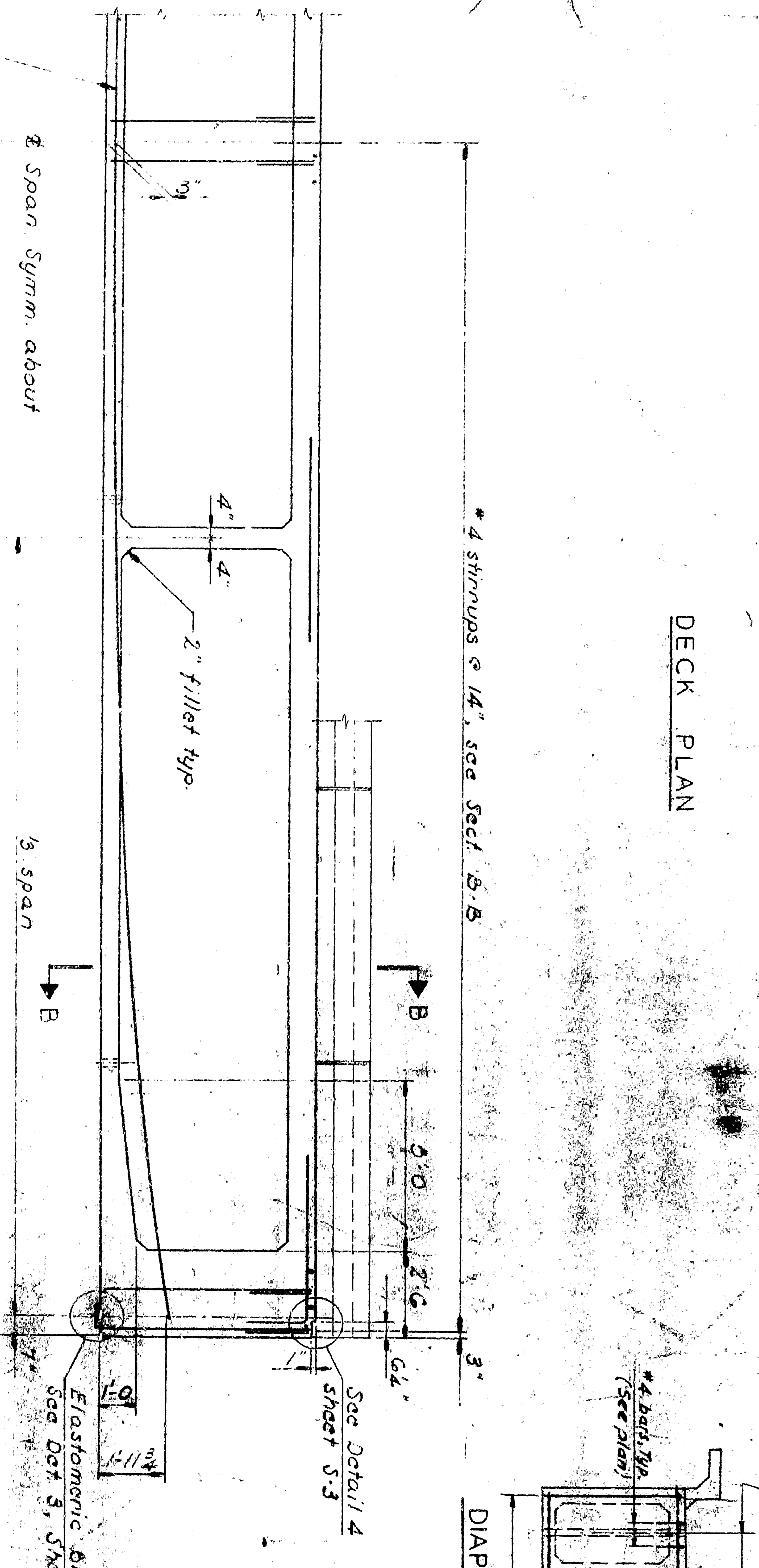
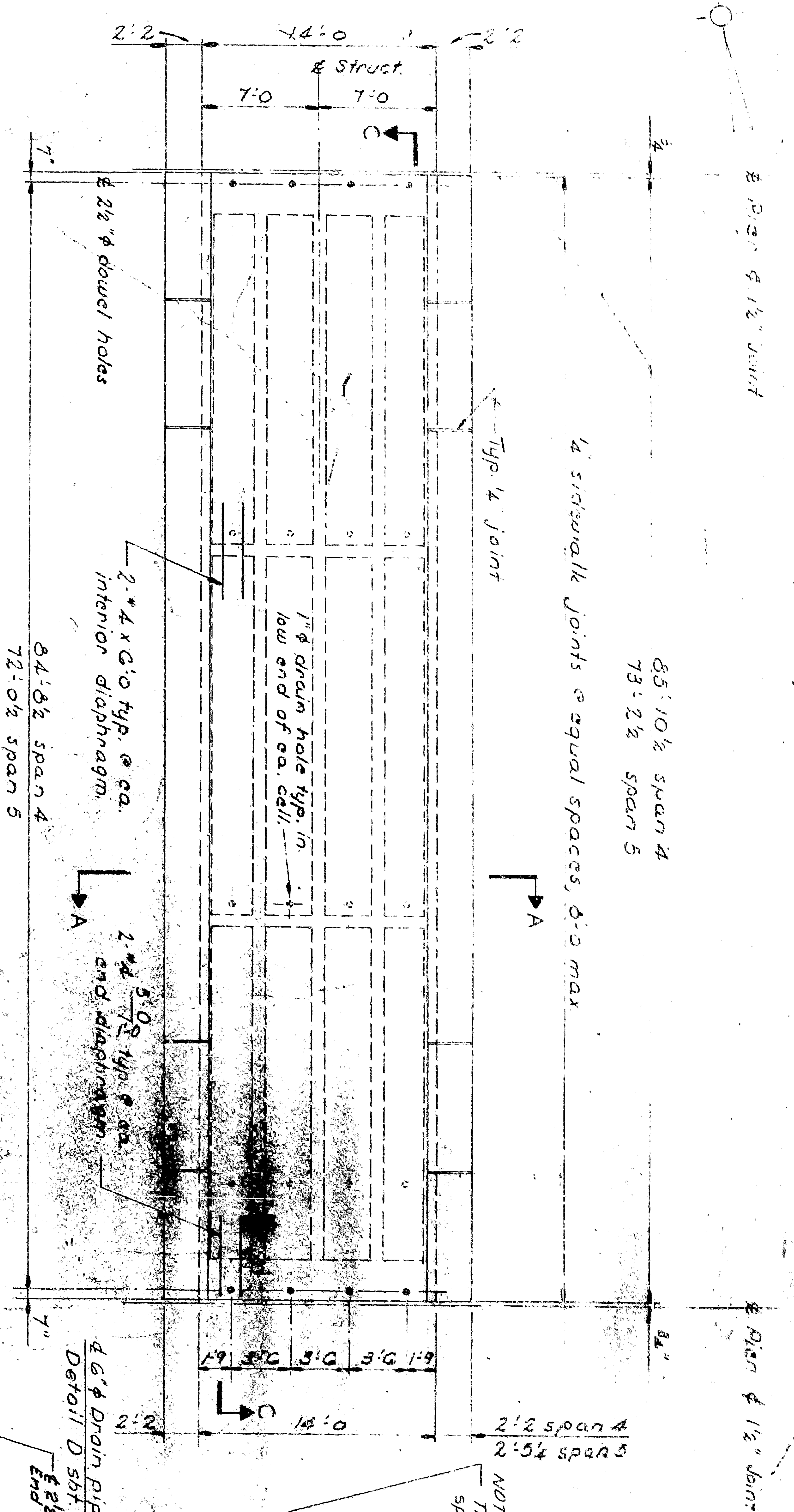
DESIGNED BY: W. Lippold  
 DRAWN BY: E. Washburn  
 CHECKED BY: H. S. Zuck  
 APPROVED BY: D. A. Kozick

SECTION C-C

REV	DESCRIPTION	DATE
1	Checkers Correction	12/24/58
2	Checkers Correction	1/14/59
3	Checkers Correction	1/14/59

DE LEIWE GATHER & COMPANY  
 SAN FRANCISCO, CALIFORNIA

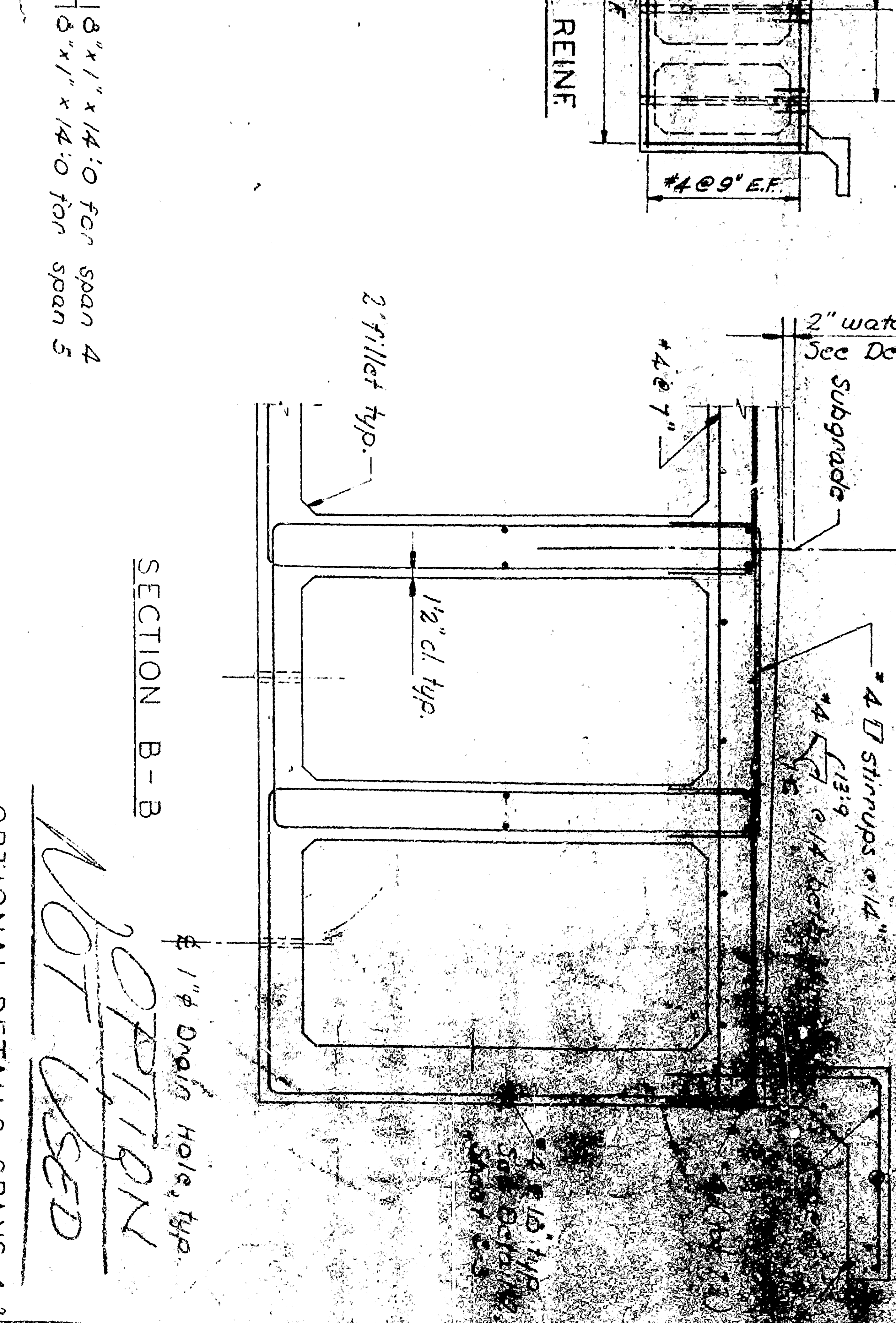
SHEET NO. 12-11  
 SCALE: None  
 DATE: Dec. 65



Note: Path of center of gravity of post-tensioning steel shall approximate a parabola. Anchor points shall be located at the normal tendon details, including groutage and to be submitted for approval of the Engineer.

Working force P (final) shall be:  
 Span 4, P = 4135 kips final force  
 Span 5, P = 3130 kips final force  
 P = 14000 psi at post-tensioning.

**AS BUILT**



SECTION C-C

OPTIONAL DETAILS, SPANS 4 & 5  
**COLTON CUT-OFF**  
 SOUTHERN PACIFIC COMPANY  
 PACIFIC LINES  
 CITY OF SAN BERNARDINO  
 ARROW/ ROUTE-RIALTO AVE UNDERPASS  
 BRIDGE M.P. 4900  
 POST-TENSIONED BOX GIRDER DETAIL  
 DE LEIWE GATHER & COMPANY  
 ENGINEERS  
 SAN FRANCISCO, CALIFORNIA  
 SHEET NO. 102-11  
 SCALE: None  
 DATE: Dec. 65

DESIGNED BY: W. Lippold  
 DRAWN BY: E. Washburn  
 CHECKED BY: H. S. Zuck  
 APPROVED BY: D. A. Kozick

REV.	DESCRIPTION	DATE
1	Checkers Correction	12/24/65
2	Checkers Correction	12/24/65